

Qty. Description

1 **Unilift AP35B.50.08.A1.V**



Note! Product picture may differ from actual product

Product No.: On request
Submersible effluent pump

Vertical single-stage stainless steel submersible pump with integrated submersible 1-phase motor.

The pump is fitted with ring stand and carrying handle and is supplied with a 10 m mains cable and a level switch for automatic start and stop.

The impeller is a V impeller for 35 mm free passage suitable for pumping surface water, groundwater, wastewater and similar.

The pump has a double shaft seal and an intermediate oil chamber pre-filled with non-toxic special oil.

The motor is insulation class F with thermal overload protection and has long-life deep-groove greased-for-life ball bearings.

The pump has R 2" discharge port and is ready for installation either free-standing or on an auto-coupling system.

Liquid:
Pumped liquid: Any Newtonian liquid
Liquid max temp: 40 °C
Density: 998.2 kg/m³

Technical:
Type of impeller: V
Maximum particle size: 35 mm
Approvals: CE,VDE,EAC,RCM,LGABG,TUVRHWID,

Materials:
Pump housing: Stainless steel
DIN W.-Nr. 1.4301
AISI 304
Impeller: Stainless steel
DIN W.-Nr. 1.4301
AISI 304

Installation:
Range of ambient temperature: 0 .. 40 °C
Pump outlet: R 2"
Maximum installation depth: 7 m
Auto-coupling: Y

Electrical data:

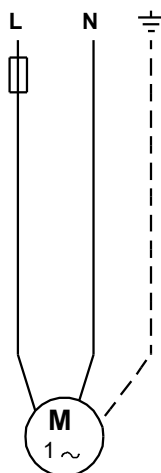
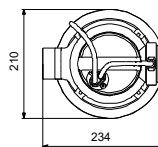
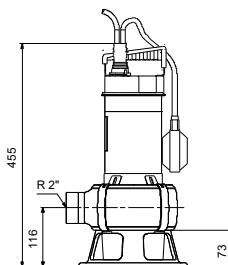
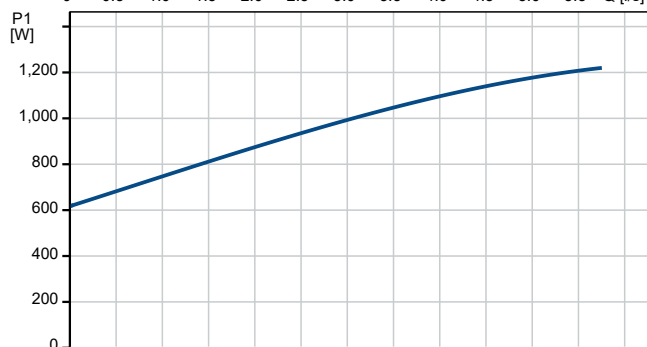
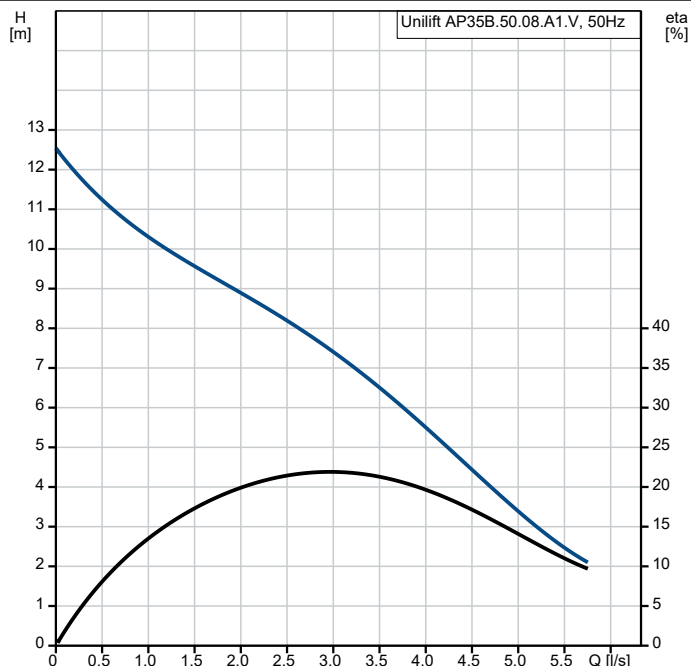
Qty.	Description
------	-------------

Motor type 1-phase:	PSC
Power input - P1:	1.25 kW
Mains frequency:	50 Hz
Rated voltage:	1 x 230 V
Rated current:	5.44 A
Cos phi - power factor:	0.98
Rated speed:	2795 rpm
Capacitor size - run:	16 µF/400 V
Enclosure class (IEC 34-5):	IP68
Insulation class (IEC 85):	F
Length of cable:	10 m
Type of cable plug:	SCHUKO

Others:

Net weight:	11.6 kg
Gross weight:	12.9 kg
Danish VVS No.:	391270342
Swedish RSK No.:	5886037
Country of origin:	HU
Custom tariff no.:	84137021

Description	Value
General information:	
Product name:	Unilift AP35B.50.08.A1.V
Product No:	On request
EAN number:	On request
Technical:	
Max flow:	5.83 l/s
Max flow:	5.83 l/s
Head max:	13 m
Type of impeller:	V
Maximum particle size:	35 mm
Approvals:	CE,VDE,EAC,RCM,LGABG,TUVRHWD,
Materials:	
Pump housing:	Stainless steel
Pump housing:	DIN W.-Nr. 1.4301
Pump housing:	AISI 304
Impeller:	Stainless steel
Impeller:	DIN W.-Nr. 1.4301
Impeller:	AISI 304
Installation:	
Range of ambient temperature:	0 .. 40 °C
Pump outlet:	R 2"
Maximum installation depth:	7 m
Inst dry/wet:	S
Installation:	horizontal or vertical
Auto-coupling:	Y
Liquid:	
Pumped liquid:	Any Newtonian liquid
Liquid max temp:	40 °C
Density:	998.2 kg/m ³
Electrical data:	
Motor type 1-phase:	PSC
Power input - P1:	1.25 kW
P2:	0.71 kW
Mains frequency:	50 Hz
Rated voltage:	1 x 230 V
Rated current:	5.44 A
Cos phi - power factor:	0.98
Rated speed:	2795 rpm
Capacitor size - run:	16 µF/400 V
Enclosure class (IEC 34-5):	IP68
Insulation class (IEC 85):	F
Built-in motor protection:	CONTACT
Thermal protec:	internal
Length of cable:	10 m
Type of cable plug:	SCHUKO
Controls:	
Level switch:	float switch
Others:	
Net weight:	11.6 kg
Gross weight:	12.9 kg
Danish VVS No.:	391270342
Swedish RSK No.:	5886037
Country of origin:	HU
Custom tariff no.:	84137021



On request Unilift AP35B.50.08.A1.V 50 Hz

