

# Utility sink VK44wall

Art. no. VK44STD  
GTIN 7393069021967



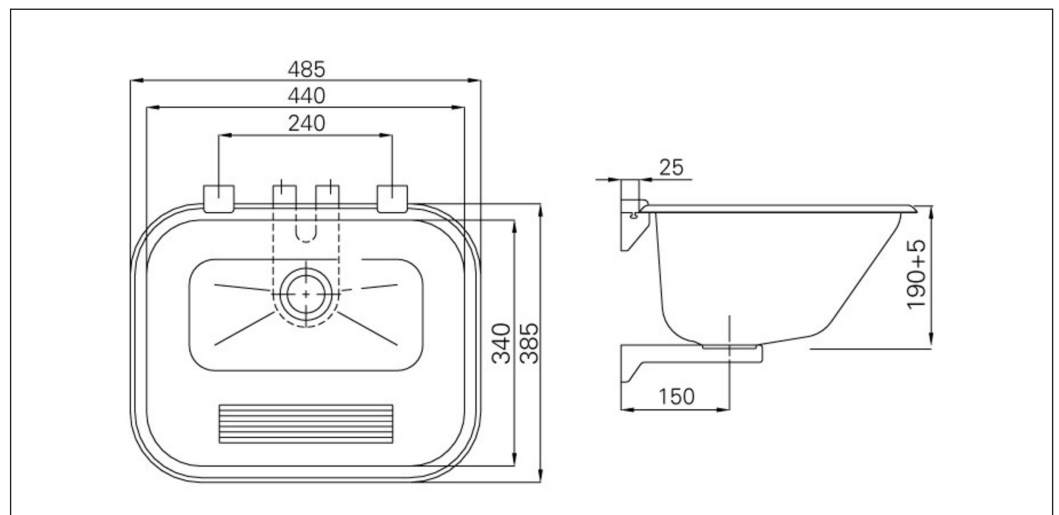
<b>Overall dimension in mm</b>	485 x 385 x 190
<b>Depth in mm</b>	190
<b>Bowl dim. in mm</b>	440 x 340 x 190
<b>Waste hole dim. in mm</b>	52
<b>Volume in L</b>	22
<b>Material</b>	AISI 304
<b>Material thickness in mm</b>	0,8
<b>Installation height in mm</b>	900
<b>Product load in N</b>	1000
<b>Gross weight in kg</b>	2.50
<b>Weight, pallet</b>	110.00
<b>Pcs per pallet</b>	34

## Description

Wall hung utility sink in stainless steel. Supplied with fixing brackets.

## Installation

Fix supporting bracket and waste to the sink. Fasten the lower part of the upper brackets to the wall according to enclosed drill template, and put the sink on top and fasten with the upper part of the brackets. Fix the supporting bracket to the wall through the two holes in the bracket. Screw and plug are supplied with the product.



# Installation VK44wall

## ASSEMBLY:

Included in the box:

- \* Wash basin
- \* Mounting equipment
- \* Installation instructions w / bormal

Supplement: valve

Make sure all parts are in place before assembly commences.

Mount the valve and support bracket to the wash basin.

The wall brackets are fastened to the wall in

accordance with 1: 1 drilling template before placing the washbasin in the fastener which is locked by sliding the upper part of the bracket.

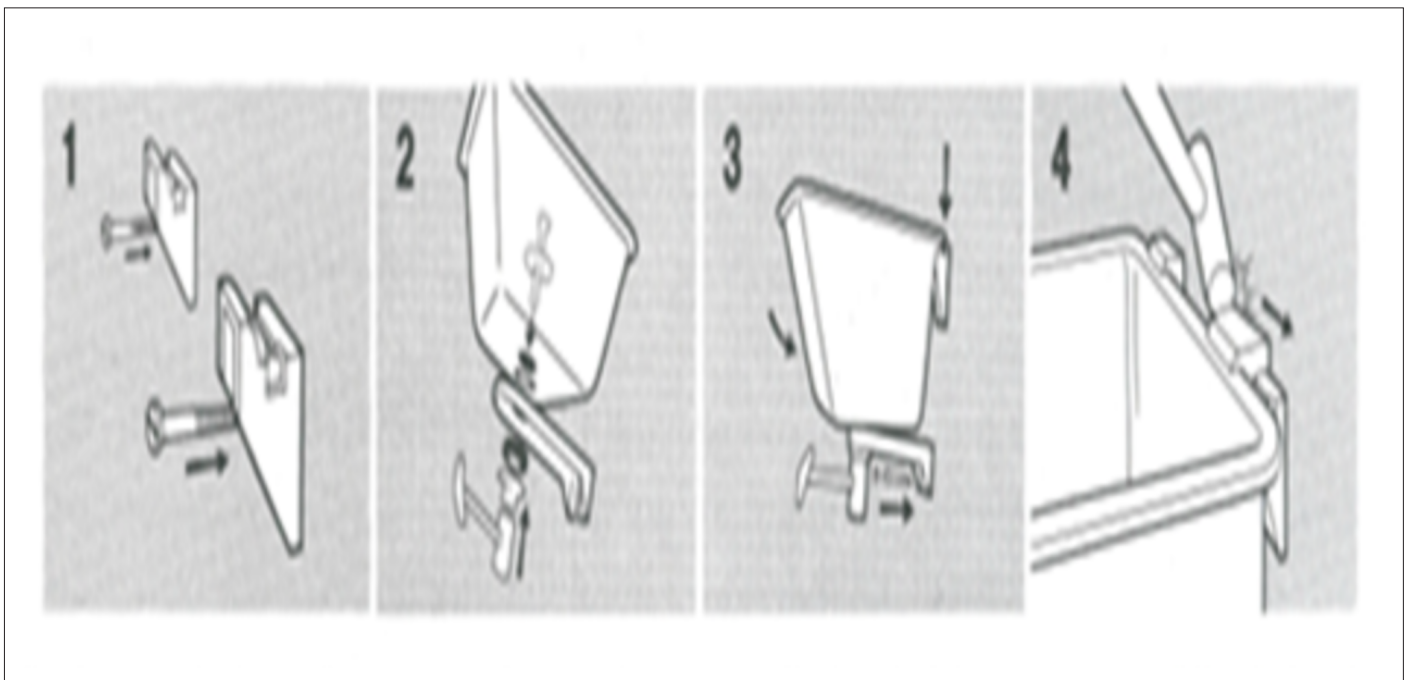
The support bracket is then secured to the wall through the mounting holes. Screws and plugs included.

## SPARE PARTS:

Cellular Packing: 91099

Mounting bracket upper: 91014

Bracket bracket part: 91015



# Maintenance VK44wall

## MAINTENANCE: INTRAS PRODUCTS IN STAINLESS STEEL

In order for your stainless steel AISI304 Intra product to retain original quality and appearance, we recommend regular cleaning. Use mild soap or detergents specially designed for stainless steel and clean water. Then wipe the surface with a dry cloth. Never use cleaners containing chlorine, iodine, fluorine or abrasives in stainless steel.

Also avoid contact with acid solutions and other substances that are not compatible with stainless steel.

Remember, for example, foods and skin care products can contain such substances, such as ketchup, juice, salt, some cleansing and nail polish, etc. Remove the spill immediately.

Take care of the following:

- \* Do not allow water or other liquid to dry. This is to avoid shielding on the surface.
- \* Even if stainless steel withstands hard handling, it will easily scratch sharp objects. For products with a normal polished (brushed) finish, this will look good when the product is new, but after a while it will be leveled out without the steel losing its shine. For satin and sanded products, the scratches will always be clearly visible. Never use scouring powder or steel wool in stainless steel. In addition to scratching the steel, steel wool leaves small particles that can develop into rust spots that can over time attack the steel.
- \* Stainless steel must not be in contact with or in chlorine solutions for a long time.
- \* Silver polish puts spots that can not be removed.



Wondershare  
PDFelement

# Utility sink VK50wall

Art. no. VK50STD  
GTIN 7393069022117



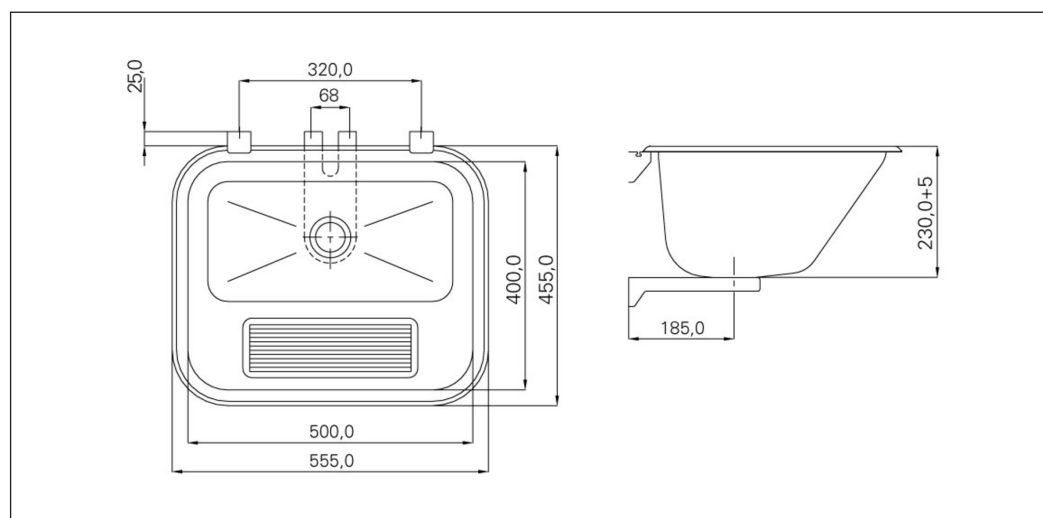
<b>Overall dimension in mm</b>	555 x 455 x 230
<b>Depth in mm</b>	230
<b>Bowl dim. in mm</b>	500 x 400 x 230
<b>Waste hole dim. in mm</b>	52
<b>Volume in L</b>	34
<b>Material</b>	AISI 304
<b>Material thickness in mm</b>	0,9
<b>Installation height in mm</b>	900
<b>Product load in N</b>	1000
<b>Gross weight in kg</b>	4.00
<b>Pcs per pallet</b>	24

## Description

Wall hung utility sink in stainless steel. Supplied with fixing brackets.

## Installation

Fix supporting bracket and waste to the sink. Fasten the lower part of the upper brackets to the wall according to enclosed drill template, and put the sink on top and fasten with the upper part of the brackets. Fix the supporting bracket to the wall through the two holes in the bracket. Screw and plug are supplied with the product.



# Installation VK50wall

## ASSEMBLY:

Included in the box:

- \* Wash basin
- \* Clips
- \* Cutting template 1: 1

Addition: Valve with overflow

Make sure all parts are in place before assembly commences.

When placing the sink in the worktop, space should

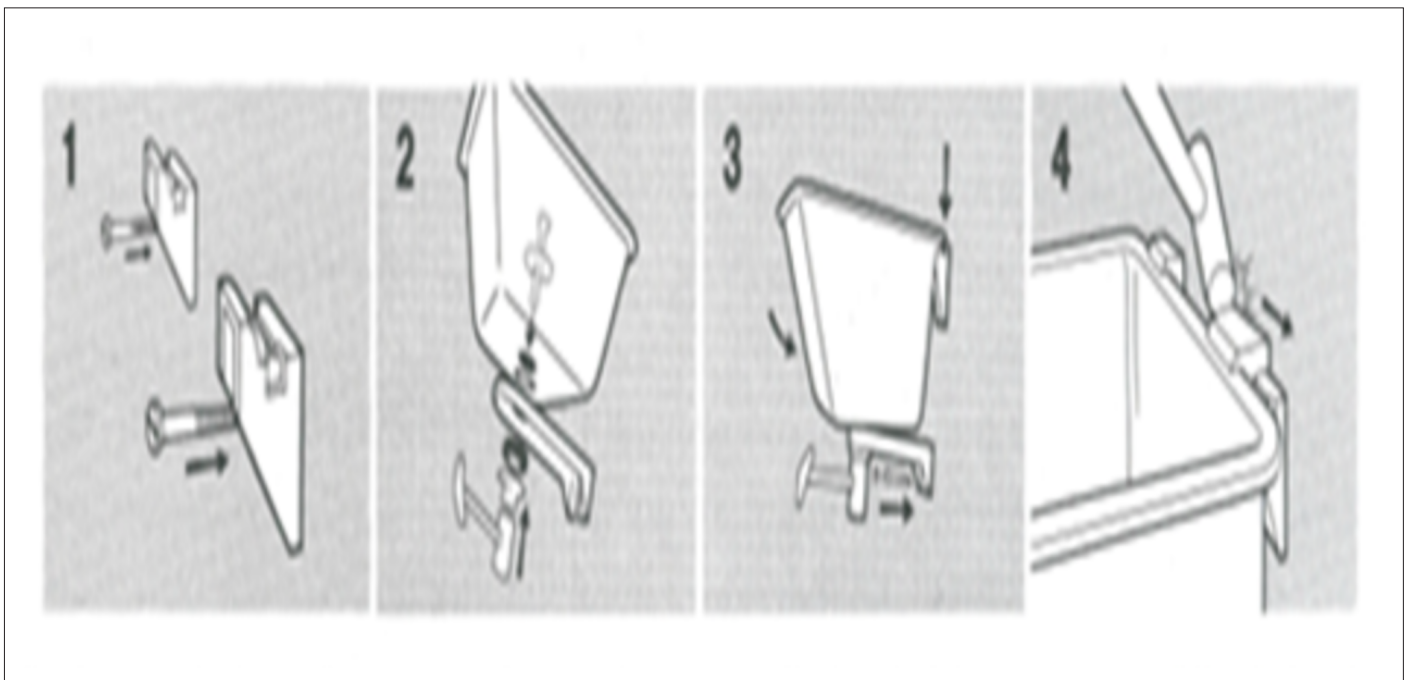
be used for bench mounting of the mixer between the wall and the wash basin.

Cut holes in worktop according to 1: 1 cutout template. Place the sink in the worktop and screw the fixing screws that are located in the clips along the side of the tub.

For maximum leg thickness 40mm.

## SPARE PARTS:

Klips: 1926001



# Maintenance VK50wall

## Maintenance of Intra products in stainless steel

Congratulations on your purchase of an Intra product that has been produced with care and to a high quality. Many of our products are supplied with a plastic film. This film protects the product during the transport and has to be removed before use.

To keep the original quality of your Intra product in AISI304 stainless steel, we recommend regular cleaning. Use washing up liquid and clean water to clean the product after use. Rinse carefully and dry. Don't forget to clean all loose parts, e.g. the drain grating.

Please have the following in mind

- Don't let water or other liquids dry on the product. In this way you avoid that a grey coating builds up on the steel.
- Stainless steel can stand hard treatment but sharp objects can easily scratch the surface. These scratches are more visible when the product is new. After a period of use these

marks will be smoothed out, without the product losing its lustre.

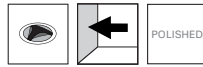
- Never use scouring powder or steel wool to clean the surface. Apart from the risk of scratches, there is also a risk that rust stains will attack the steel.
- Avoid Chlorine based solutions coming into contact with the stainless steel.
- Silver polish leaves spots that cannot be removed.
- Food-stuffs that contain acid or other substances must quickly be removed (e.g. juices, salt, mustard, mayonnaise).

## Discoloration

More stubborn spots are often caused by impurities in the water or household substances. These can be removed with special polish agents for stainless steel. We recommend the use of Intra Shining Kit. Dull spots can become lustrous again if rubbed with chalk on a soft cloth.

# Utility sink VK60wall

Art. no. VK60STD  
GTIN 7393069022315



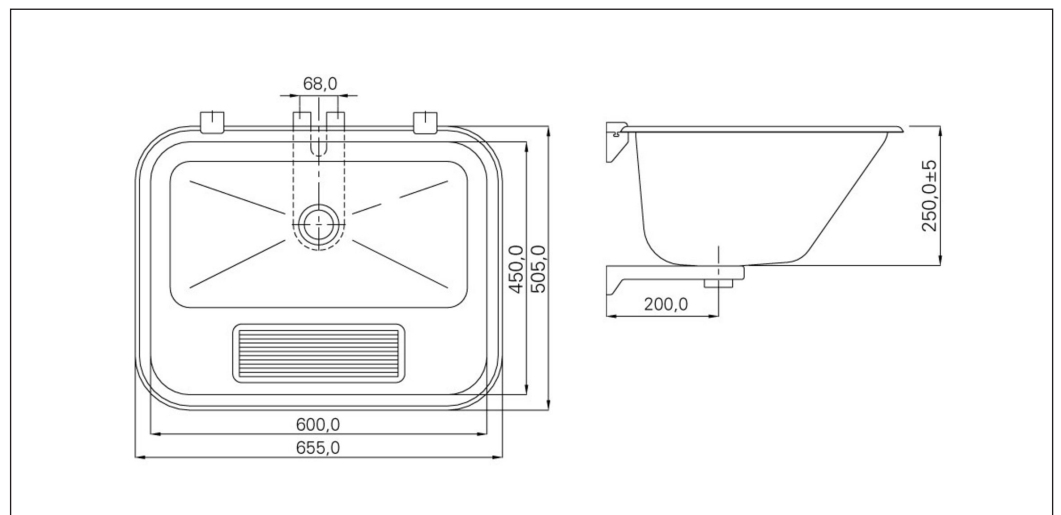
<b>Overall dimension in mm</b>	655 x 505 x 250
<b>Depth in mm</b>	250
<b>Waste hole dim. in mm</b>	52
<b>Volume in L</b>	47
<b>Material</b>	AISI 304
<b>Material thickness in mm</b>	0,9
<b>Installation height in mm</b>	900
<b>Product load in N</b>	1000
<b>Gross weight in kg</b>	5.00
<b>Weight, pallet</b>	103.40
<b>Pcs per pallet</b>	16

## Description

Wall hung utility sink in stainless steel. Supplied with fixing brackets.

## Installation

Fix supporting bracket and waste to the sink. Fasten the lower part of the upper brackets to the wall according to enclosed drill template, and put the sink on top and fasten with the upper part of the brackets. Fix the supporting bracket to the wall through the two holes in the bracket. Screw and plug are supplied with the product.



# Installation VK60wall

## ASSEMBLY:

Included in the box:

- \* Wash basin
- \* Clips
- \* Cutting template 1: 1

Addition: Valve with overflow

Make sure all parts are in place before assembly commences.

When placing the sink in the worktop, space should

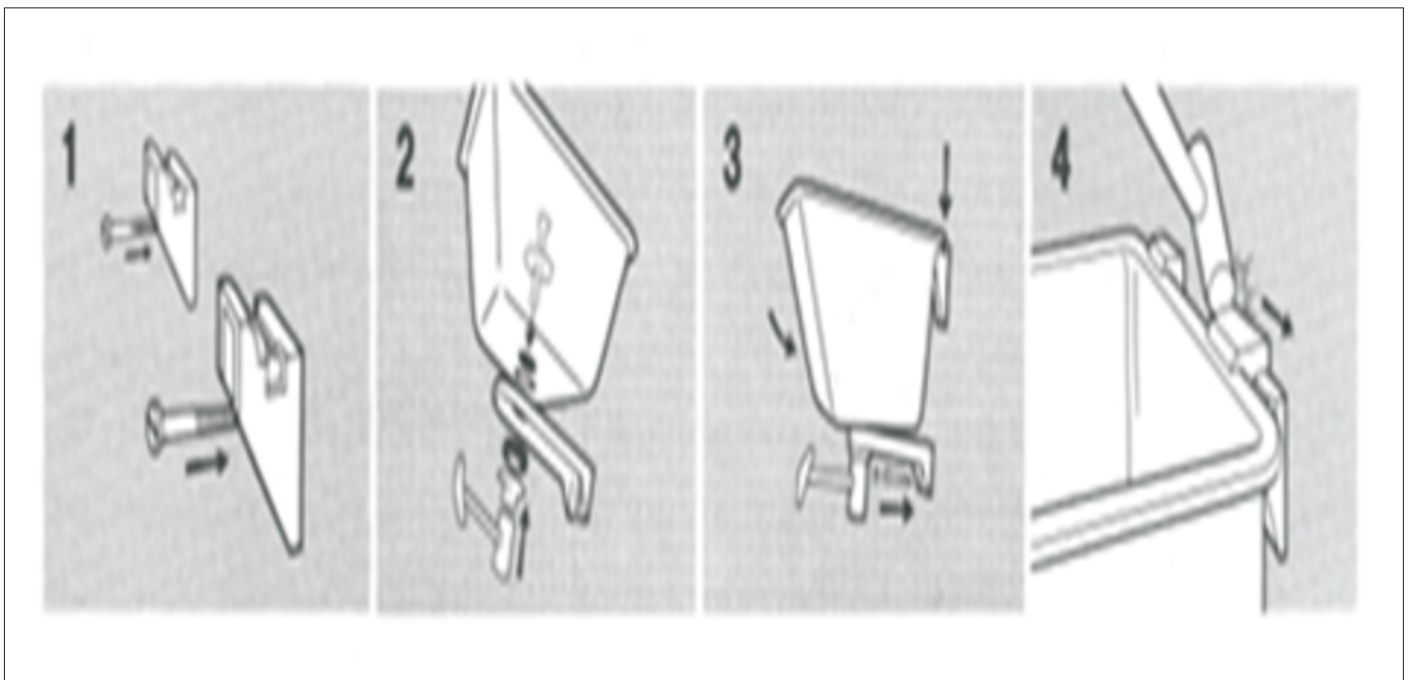
be used for bench mounting of the mixer between the wall and the wash basin.

Cut holes in worktop according to 1: 1 cutout template. Place the sink in the worktop and screw the fixing screws that are located in the clips along the side of the tub.

For maximum leg thickness 40mm.

## SPARE PARTS:

Klips: 1926001





# Maintenance VK60wall

## Maintenance of Intra products in stainless steel

Congratulations on your purchase of an Intra product that has been produced with care and to a high quality. Many of our products are supplied with a plastic film. This film protects the product during the transport and has to be removed before use.

To keep the original quality of your Intra product in AISI304 stainless steel, we recommend regular cleaning. Use washing up liquid and clean water to clean the product after use. Rinse carefully and dry.

Don't forget to clean all loose parts, e.g. the drain grating.

Please have the following in mind

- Don't let water or other liquids dry on the product. In this way you avoid that a grey coating builds up on the steel.
- Stainless steel can stand hard treatment but sharp objects can easily scratch the surface. These scratches are more visible when the product is new. After a period of use these

marks will be smoothed out, without the product losing its lustre.

- Never use scouring powder or steel wool to clean the surface. Apart from the risk of scratches, there is also a risk that rust stains will attack the steel.
- Avoid Chlorine based solutions coming into contact with the stainless steel.
- Silver polish leaves spots that cannot be removed.
- Food-stuffs that contain acid or other substances must quickly be removed (e.g. juices, salt, mustard, mayonnaise).

## Discoloration

More stubborn spots are often caused by impurities in the water or household substances. These can be removed with special polish agents for stainless steel.

We recommend the use of Intra Shining Kit. Dull spots can become lustrous again if rubbed with chalk on a soft cloth.