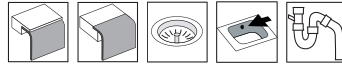


# Frame FR520

Art. no. FR520F  
GTIN 7393069023527



<b>Cabinet size</b>	60
<b>Overall dimension in mm</b>	566 x 426 x 180
<b>Bowl dim. in mm</b>	520 x 380 x 180
<b>Waste hole dim. in mm</b>	97
<b>Material</b>	EN 1.4301, AISI 304, SS2333
<b>Material thickness in mm</b>	0,9
<b>Gross weight in kg</b>	5.00
<b>Net weight in kg</b>	4.20
<b>Design</b>	Halvor Thorsen/ Martin Krafft

## Description

Bowl for inset, under- or flush mount. The firm lines and the rounded corners (R25) gives a modern and harmonious expression. Delivers with overflow, basket waste, and water trap.

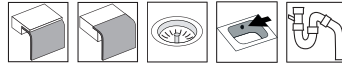
OBS! Model for under mount with a smaller rim (10mm) has its own article nr: FR520-10

## Optional



# Frame FR340

**Art. no.** FR340F  
**GTIN** 7393069023442



**Cabinet size** 40  
**Overall dimension in mm** 386 x 426 x 160  
**Bowl dim. in mm** 340 x 380 x 160  
**Waste hole dim. in mm** 97  
**Material** EN 1.4301, AISI 304, SS2333  
**Material thickness in mm** 0,9  
**Design** Halvor Thorsen/ Martin Krafft

## Description

Bowl for inset, under- or flush mount. The firm lines and the rounded corners (R25) give a modern and harmonious expression. Delivers with overflow, basket waste, and water trap.

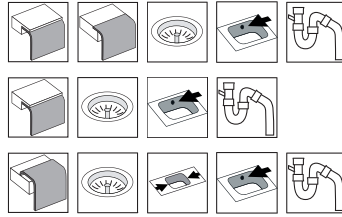
OBS! Model for under mount with a smaller rim (10mm) has its own article nr: FR340-10

Optional



# Frame FR155

<b>Art. no.</b>	FR155F
<b>GTIN</b>	7393069023374
<b>Art. no.</b>	FR155-10
<b>GTIN</b>	7393069023343
<b>Art. no.</b>	FR155NF
<b>GTIN</b>	7393069023404



<b>Cabinet size</b>	30
<b>Overall dimension in mm</b>	201 x 426 x 120
<b>Bowl dim. in mm</b>	155 x 380 x 120
<b>Waste hole dim. in mm</b>	97
<b>Material</b>	EN 1.4301, AISI 304, SS2333
<b>Material thickness in mm</b>	1,25
<b>Gross weight in kg</b>	2.80
<b>Net weight in kg</b>	1.30
<b>Design</b>	Halvor Thorsen/ Martin Krafft

## Description

Bowl for inset, under- or flush mount. The firm lines and the rounded corners (R25) gives a modern and harmonious expression. Delivers with overflow, basket waste, installation clips and water trap.

NB! Model for under mount with a smaller rim (10mm) has its own article nr: FR155-10

Optional



# Frame FR520-BRASS

**Art. no.** FR520F-BRASS  
**GTIN** 7393069023848



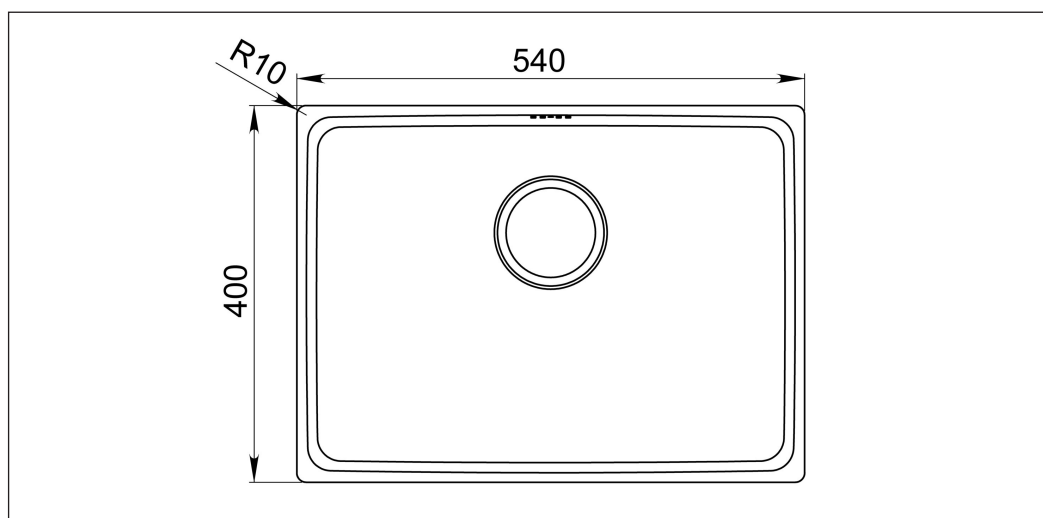
**Cabinet size** 60  
**Overall dimension in mm** 566 x 426 x 180  
**Bowl dim. in mm** 520 x 380 x 180  
**Waste hole dim. in mm** 97  
**Material** EN 1.4301, AISI 304, SS2333  
**Material thickness in mm** 0,9  
**Design** Halvor Thorsen/ Martin Krafft

## Description

Bring the luxury feel into the kitchen with our PVD coated kitchen sink that cleverly adds glow to the kitchen! Create the perfect atmosphere and experience design for everyday life.

Bowl for under- or flush mount in brass PVD coating. The firm lines and the rounded corners (R25) gives a modern and harmonious expression. Delivered with overflow, basket waste and water trap.

NB! Model for under mount with a smaller rim (10mm) has its own article nr: FR520-10-BRASS



Optional

