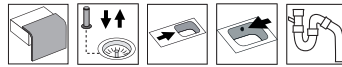


Frame FR97SX

Art. no. FR97SXRf
GTIN 7393069013993

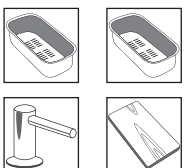


Cabinet size	60
Overall dimension in mm	970 x 510
Bowl dim. in mm	520 x 380 x 180
Cut-out dimension, inset model	950 x 490
Waste hole dim. in mm	97
Waste hole placement	upper center
Material	EN 1.4301, AISI 304, SS2333
Material thickness in mm	0,9
Net weight in kg	7.20
Pcs per pallet	10
Design	Halvor Thorsen/ Martin Krafft

Description

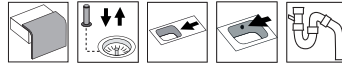
Inset sink with universal flange, for inset, under- and flush mount, with 1 bowl and drainer. The firm lines and the rounded corners give a modern and harmonious expression. Delivers with pop-up waste, overflow and drain grating. Water trap, soap dispenser and rinsing basket in black plastic is included with the product.

Included Optional



Frame FR97SX

Art. no. FR97SXLF
GTIN 7393069014013



Cabinet size	60
Overall dimension in mm	970 x 510
Bowl dim. in mm	520 x 380 x 180
Cut-out dimension, inset model	950 x 490
Waste hole dim. in mm	97
Waste hole placement	upper center
Material	EN 1.4301, AISI 304, SS2333
Material thickness in mm	0,9
Net weight in kg	7.20
Pcs per pallet	10
Design	Halvor Thorsen/ Martin Krafft

Description

Inset sink with universal flange, for inset, under- and flush mount, with 1 bowl and drainer. The firm lines and the rounded corners give a modern and harmonious expression. Delivers with pop-up waste, overflow and drain grating. Water trap, soap dispenser and rinsing basket in black plastic is included with the product.

Included Optional

