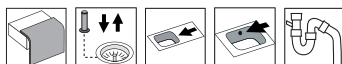


# Frame FR78SXH

**Art. no.** FR78SXHLF  
**GTIN** 7393069016789



<b>Cabinet size</b>	80
<b>Overall dimension in mm</b>	780 x 510
<b>Depth in mm</b>	160
<b>Bowl dim. in mm</b>	520 x 380 x 180
<b>Small bowl dim. in mm</b>	155 x 380 x 120
<b>Cut-out dimension, inset model</b>	760 x 490
<b>Waste hole dim. in mm</b>	97
<b>Waste hole placement</b>	upper center
<b>Material</b>	EN 1.4301, AISI 304, SS2333
<b>Material thickness in mm</b>	0,9
<b>Gross weight in kg</b>	9.30
<b>Net weight in kg</b>	5.30
<b>Design</b>	Halvor Thorsen / Martin Kraft

## Description

Inset sink with universal flange, for inset, under- and flush mount, with 1 extra large bowl and 1 small. The firm lines and the rounded corners give a modern and harmonious expression. Delivers with pop-up waste, overflow and drain grating in both bowls. Water trap, soap dispenser and rinsing basket in black plastic is included with the product.

Included    Optional

