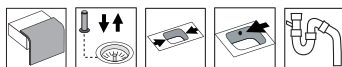


# Frame FR78D

**Art. no.** FR78DF  
**GTIN** 7393069014675



<b>Cabinet size</b>	80
<b>Overall dimension in mm</b>	780 x 510
<b>Depth in mm</b>	160
<b>Bowl dim. in mm</b>	340 x 380 x 160
<b>Small bowl dim. in mm</b>	340 x 380 x 160
<b>Cut-out dimension, inset model</b>	760 x 490
<b>Waste hole dim. in mm</b>	97
<b>Waste hole placement</b>	upper center
<b>Material</b>	EN 1.4301, AISI 304, SS2333
<b>Material thickness in mm</b>	0,9
<b>Gross weight in kg</b>	8.80
<b>Net weight in kg</b>	4.80
<b>Design</b>	OddThorsen design

## Description

Inset sink with universal flange, for inset, under- and flush mount, with 2 bowls. The firm lines and the rounded corners give a modern and harmonious expression. Delivers with pop-up waste, overflow and drain grating in both bowls. Water trap, soap dispenser and rinsing basket in black plastic is included with the product.

Included    Optional

