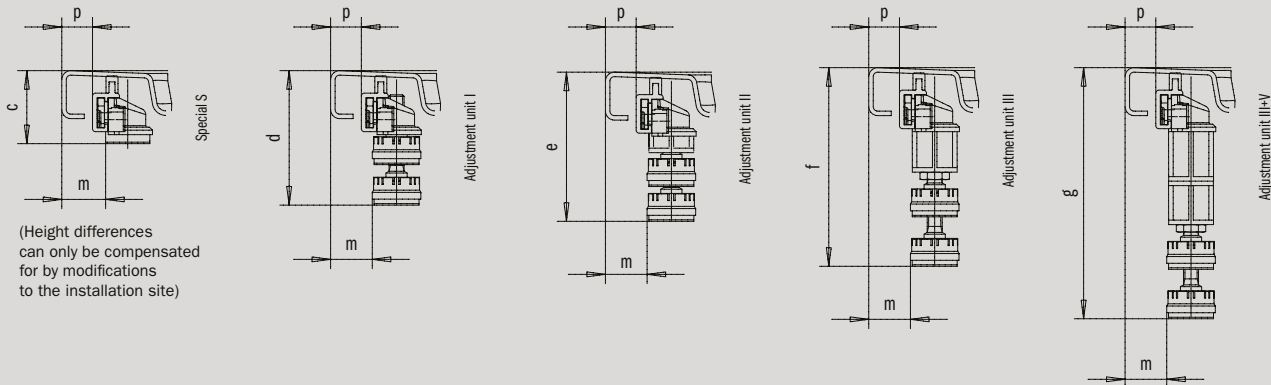


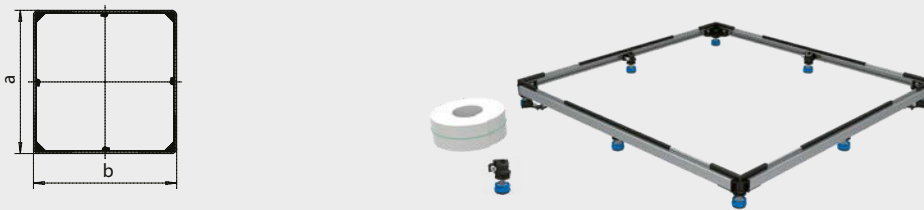
# INSTALLATION

## SHOWER TRAY FOOT FRAME FR 5300 FLEX PLUS

- suitable for flat and ultra flat square shower trays
- size adjustment of maximum 90 x 90 cm or 120 x 120 cm and 150 x 180 cm (aluminium connecting profiles can be cut to smaller size)
- feet are sound-insulated; optimum sound insulation to DIN 4109/A1 in conjunction with KALDEWEI sound insulating set DWS
- scope of supply can additionally include: sound insulating strip WAS 70, two ground fasteners, one additional foot unit



All adjustable units are included in delivery.



		rectangular shower trays		
		90/90	120/120	150/180*
External length	a	859	1159	1459 mm
External width	b	859	1159	1759 mm
Installed height (nicht verstellbar)	c	49	49	49 mm
Installed height	d	63-77	63-77	63-77 mm
Installed height	e	75-99	75-99	75-99 mm
Installed height	f	97-131	97-131	97-131 mm
Installed height	g	131-164	131-164	131-164 mm
Separation rim of tray to frame profile	p	20	20	20 mm
Separation rim of tray to foot cap	m	28	28	28 mm
Shower tray foot frame FR 5300 FLEX PLUS		Model Order No.	Dimensions cm	Number of foot units
for CONOFLAT, SUPERPLAN, SUPERPLAN PLUS, DUSCHPLAN, SCONA		5300 530000180000	90 x 90	9
		5300 530000190000	120 x 120	9
		5300 530000200000	150 x 180*	13

\* Suitable for shower trays from 130 - 180 cm.

Please take into account: A central support is recommended for dimensions greater than 90 x 90 cm. We recommend using the KALDEWEI central support system MAS.