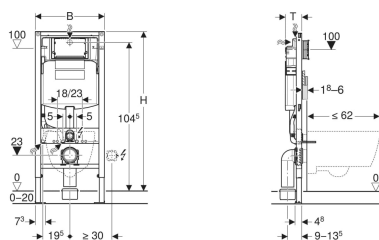


Geberit Duofix element for wall-hung WC, 112 cm, with Sigma concealed cistern 12 cm



Example image



Application purposes

- For drywall construction
- For installation in part or room-height prewall installations
- For installation in room-height installation walls
- For installation in part or room-height Geberit Duofix system walls
- For wall-hung WCs with connection dimensions in accordance with EN 33:2011
- For wall-hung WCs with projection up to 62 cm
- For single flush, dual flush or stop-and-go flush
- For floor constructions 0–20 cm

Characteristics

- Self-supporting frame, powder-coated
- Frame with $\varnothing 9$ mm drilling holes for fastening in wood frame construction
- Frame prepared for support brackets for WC ceramic appliances with small contact surfaces
- Galvanized feet
- Feet adjustable 0–20 cm
- Non-slip leg supports
- Rotatable foot plates

Scope of delivery

- Water supply connection Rp 1/2" - R 1/2", compatible with MF, with integrated angle stop valve and hand wheel
- Protection box for service opening
- 2 protection plugs
- Connection set for WC, $\varnothing 90$ mm

- Foot plate depth suitable for installation in U-profiles UW 50 and UW75 and Geberit Duofix system rails
- Connection bend can be mounted without tools at different depths, adjustable range 45 mm
- Fastening for connection bend, sound-absorbing
- Concealed cistern with front actuation
- Concealed cistern, fully insulated against condensation
- Immediate post flush possible with factory setting
- Tool-free installation and maintenance work on concealed cistern
- Water supply connection on the rear or top centre
- Protection box for service opening can be cut to length
- With conduit pipe for feed pipe for connection of Geberit AquaClean shower toilets
- Fastening option for electrical connection
- Power & Connect Box mountable

Technical data

Flow pressure	0.1-10 bar
Flush volume, factory setting	6 and 3 l
Flush volume large, adjustment range	4 / 4.5 / 6 / 7.5 l
Flush volume small, adjustment range	2-4 l

- Connection bend 90° made of PE-HD, $\varnothing 90$ mm
- Adapter socket made of PE-HD, $\varnothing 90 / 110$ mm
- 2 threaded rods M12
- Fastening material

Art. no.	B	H	T
111.300.00.5	50 cm	112 cm	12 cm

Accessories

- Geberit set of Power & Connect box and power supply unit for element for wall-hung WC
- Geberit set of support brackets for WC ceramic appliances with small contact surfaces
- Geberit Duofix set of wall anchors for single installation, corner construction
- Geberit Duofix set of wall anchors for single installation
- Geberit Duofix set of wall anchors for single and system installation
- Set of wall anchors for single installation, for Geberit Duofix element for wall-hung WC, with Sigma concealed cistern 8 cm
- Geberit Duofix fastening material for stud clearance 50–57.5 cm



- Actuator plate has to be ordered separately