

1910.0710

Line 1910

Available in 10, 12, 15 and 25 mm heights (depending on the thickness of the floor tile)

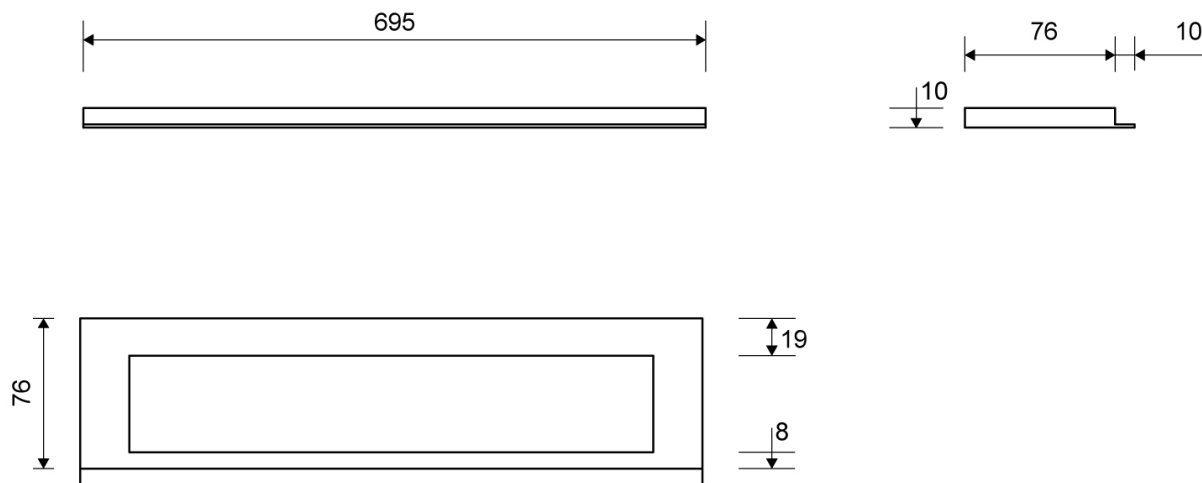
Exclusive design with top in solid 4 mm stainless steel

Insert ensures a snug fit inside the drain unit.



Specifications

ITEM NUMBER 1910.0710	GTIN NUMBER 5707692004259	WEIGHT INCLUDING PACKAGING 1650 g
WEIGHT EXCLUDING PACKAGING 1580 g	MATERIAL Stainless steel (AISI 304)	USAGE Line drain
SURFACE Brushed	INSTALLATION LENGTH (L) 695 mm	HEIGHT (H) H 10 mm
LENGTH MODEL 700 mm	FITS DRAIN UNIT 1001, 1002, 1003, 1004, 1100, 5002, 5003	INSERT Synthetic



1910.0710

Products

1910.0712

Line 1910

Available in 10, 12, 15 and 25 mm heights (depending on the thickness of the floor tile)

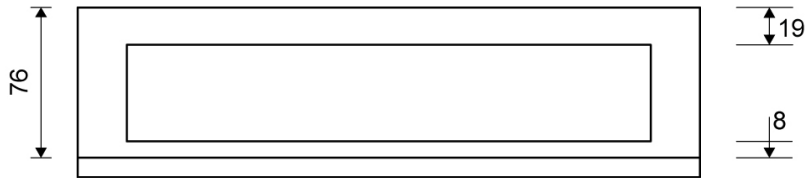
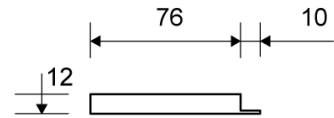
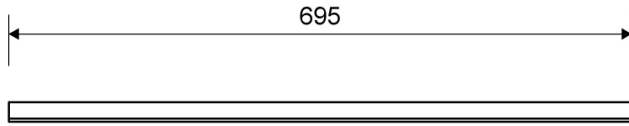
Exclusive design with top in solid 4 mm stainless steel

Insert ensures a snug fit inside the drain unit.



Specifications

ITEM NUMBER 1910.0712	GTIN NUMBER 5707692004310	WEIGHT INCLUDING PACKAGING 1910 g
WEIGHT EXCLUDING PACKAGING 1840 g	MATERIAL Stainless steel (AISI 304)	USAGE Line drain
SURFACE Brushed	INSTALLATION LENGTH (L) 695 mm	HEIGHT (H) H 12 mm
LENGTH MODEL 700 mm	FITS DRAIN UNIT 1001, 1002, 1003, 1004, 1100, 5002, 5003	INSERT Synthetic



1910.0712

Products

1910.0810

Line 1910

Available in 10, 12, 15 and 25 mm heights (depending on the thickness of the floor tile)

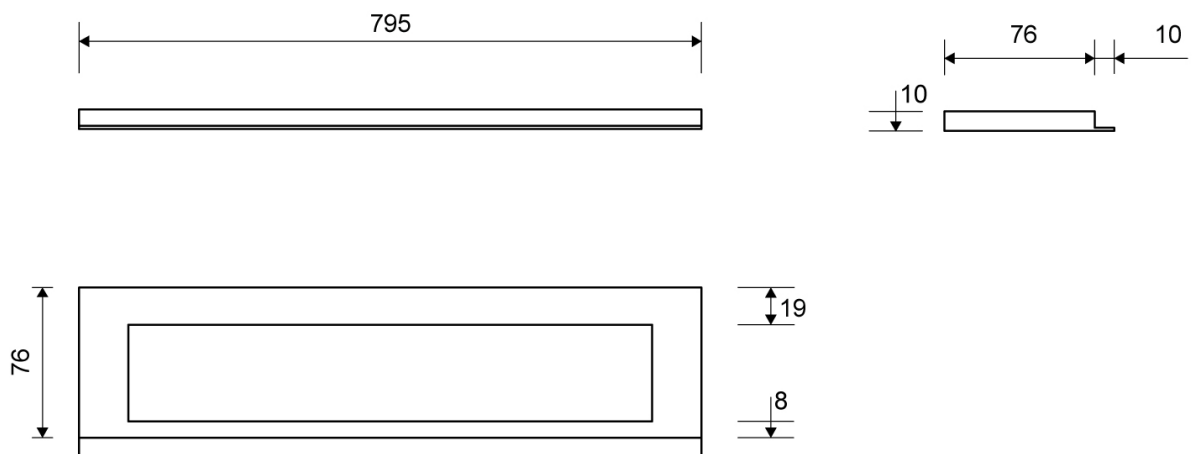
Exclusive design with top in solid 4 mm stainless steel

Insert ensures a snug fit inside the drain unit.



Specifications

ITEM NUMBER 1910.0810	GTIN NUMBER 5707692004266	WEIGHT INCLUDING PACKAGING 1860 g
WEIGHT EXCLUDING PACKAGING 1780 g	MATERIAL Stainless steel (AISI 304)	USAGE Line drain
SURFACE Brushed	INSTALLATION LENGTH (L) 795 mm	HEIGHT (H) H 10 mm
LENGTH MODEL 800 mm	FITS DRAIN UNIT 1001, 1002, 1003, 1004, 1100, 5002, 5003	INSERT Synthetic



1910.0810

Products

1910.0812

Line 1910

Available in 10, 12, 15 and 25 mm heights (depending on the thickness of the floor tile)

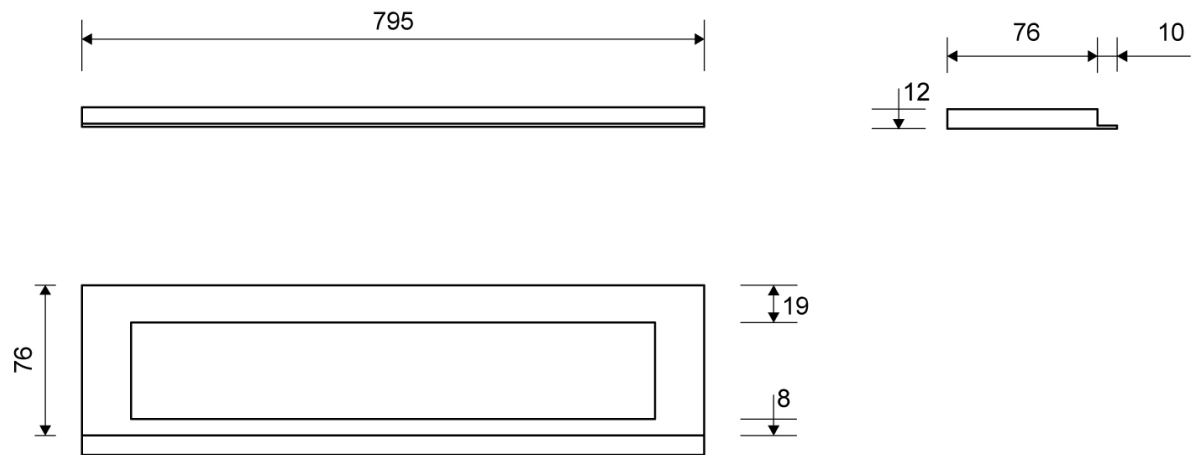
Exclusive design with top in solid 4 mm stainless steel

Insert ensures a snug fit inside the drain unit.



Specifications

ITEM NUMBER 1910.0812	GTIN NUMBER 5707692004327	WEIGHT INCLUDING PACKAGING 2140 g
WEIGHT EXCLUDING PACKAGING 2060 g	MATERIAL Stainless steel (AISI 304)	USAGE Line drain
SURFACE Brushed	INSTALLATION LENGTH (L) 795 mm	HEIGHT (H) H 12 mm
LENGTH MODEL 800 mm	FITS DRAIN UNIT 1001, 1002, 1003, 1004, 1100, 5002, 5003	INSERT Synthetic



1910.0812

Products

1910.0910

Line 1910

Available in 10, 12, 15 and 25 mm heights (depending on the thickness of the floor tile)

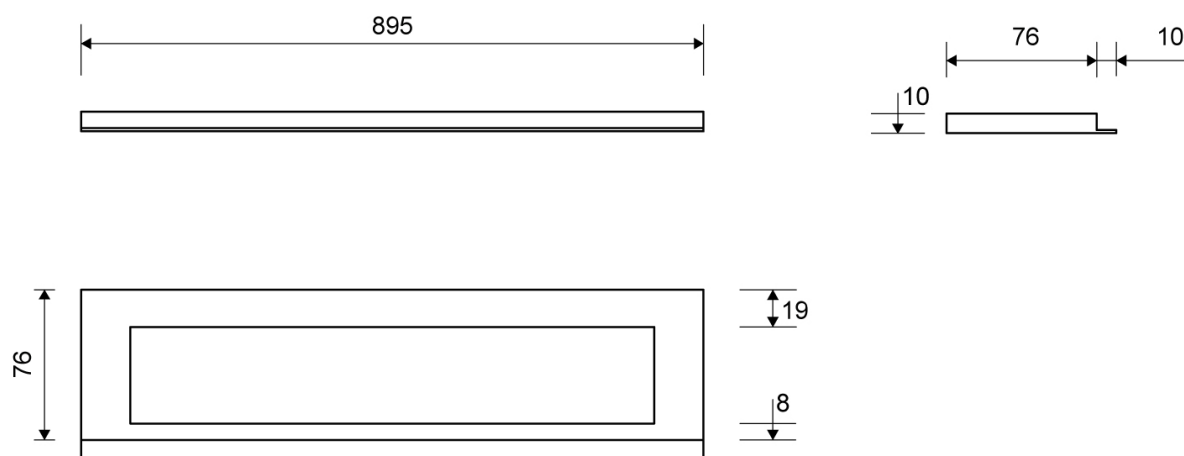
Exclusive design with top in solid 4 mm stainless steel

Insert ensures a snug fit inside the drain unit.



Specifications

ITEM NUMBER 1910.0910	GTIN NUMBER 5707692004273	WEIGHT INCLUDING PACKAGING 2050 g
WEIGHT EXCLUDING PACKAGING 1940 g	MATERIAL Stainless steel (AISI 304)	USAGE Line drain
SURFACE Brushed	INSTALLATION LENGTH (L) 895 mm	HEIGHT (H) H 10 mm
LENGTH MODEL 900 mm	FITS DRAIN UNIT 1001, 1002, 1003, 1004, 1100, 5002, 5003	INSERT Synthetic



1910.0910

Products

1910.0912

Line 1910

Available in 10, 12, 15 and 25 mm heights (depending on the thickness of the floor tile)

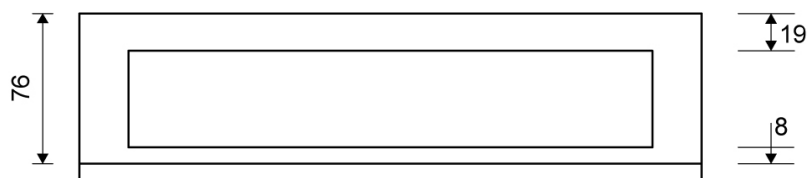
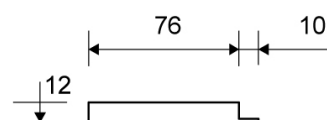
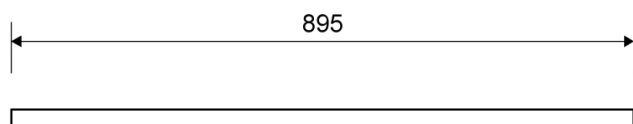
Exclusive design with top in solid 4 mm stainless steel

Insert ensures a snug fit inside the drain unit.



Specifications

ITEM NUMBER	GTIN NUMBER	WEIGHT INCLUDING PACKAGING
1910.0912	5707692004334	2380 g
WEIGHT EXCLUDING PACKAGING	MATERIAL	USAGE
2270 g	Stainless steel (AISI 304)	Line drain
SURFACE	INSTALLATION LENGTH (L)	HEIGHT (H)
Brushed	895 mm	H 12 mm
LENGTH MODEL	FITS DRAIN UNIT	INSERT
900 mm	1001, 1002, 1003, 1004, 1100, 5002, 5003	Synthetic



1910.0912

Products

1910.1010

Line 1910

Available in 10, 12, 15 and 25 mm heights (depending on the thickness of the floor tile)

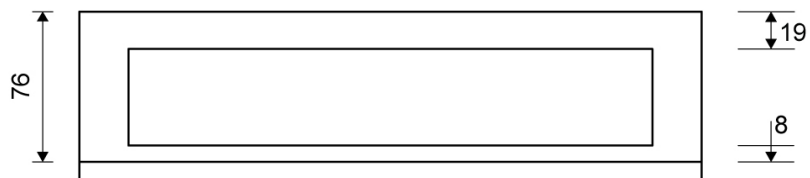
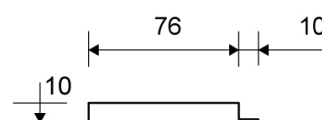
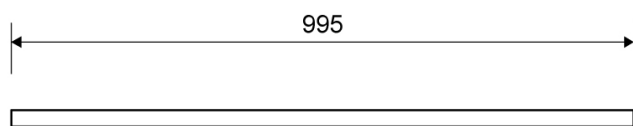
Exclusive design with top in solid 4 mm stainless steel

Insert ensures a snug fit inside the drain unit.



Specifications

ITEM NUMBER 1910.1010	GTIN NUMBER 5707692004280	WEIGHT INCLUDING PACKAGING 2250 g
WEIGHT EXCLUDING PACKAGING 2130 g	MATERIAL Stainless steel (AISI 304)	USAGE Line drain
SURFACE Brushed	INSTALLATION LENGTH (L) 995 mm	HEIGHT (H) H 10 mm
LENGTH MODEL 1000 mm	FITS DRAIN UNIT 1001, 1002, 1003, 1004, 1100, 5002, 5003	INSERT Synthetic



1910.1010

Products

1910.1012

Line 1910

Available in 10, 12, 15 and 25 mm heights (depending on the thickness of the floor tile)

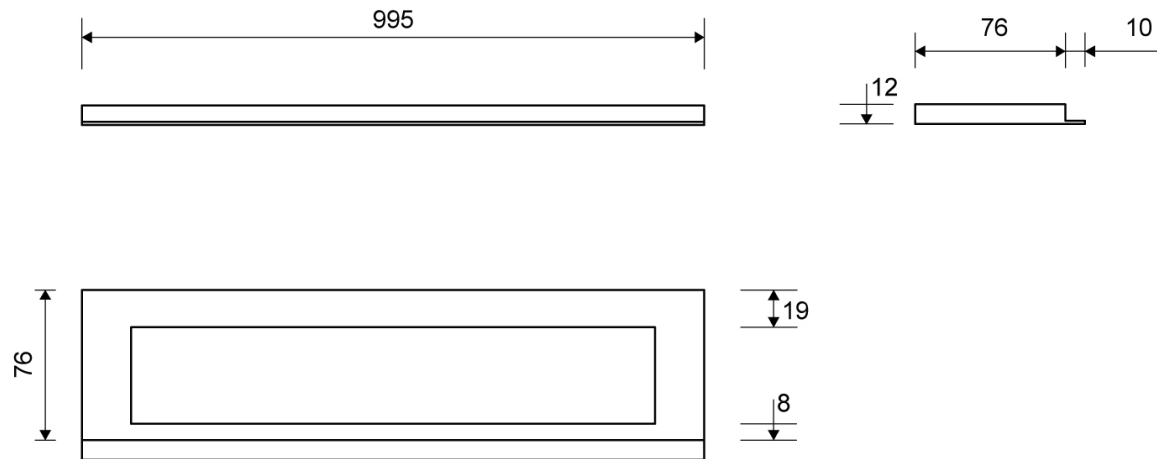
Exclusive design with top in solid 4 mm stainless steel

Insert ensures a snug fit inside the drain unit.



Specifications

ITEM NUMBER	GTIN NUMBER	WEIGHT INCLUDING PACKAGING
1910.1012	5707692004341	2650 g
WEIGHT EXCLUDING PACKAGING	MATERIAL	USAGE
2530 g	Stainless steel (AISI 304)	Line drain
SURFACE	INSTALLATION LENGTH (L)	HEIGHT (H)
Brushed	995 mm	H 12 mm
LENGTH MODEL	FITS DRAIN UNIT	INSERT
1000 mm	1001, 1002, 1003, 1004, 1100, 5002, 5003	Synthetic



1910.1012

Products

1910.1210

Line 1910

Available in 10, 12, 15 and 25 mm heights (depending on the thickness of the floor tile)

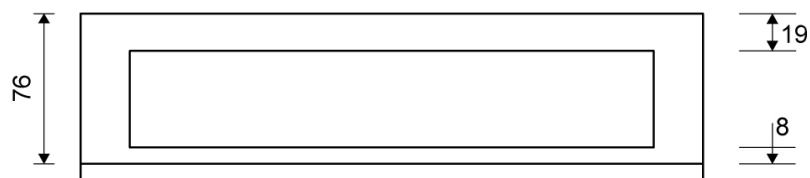
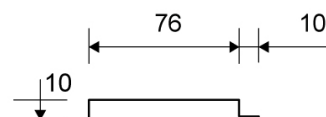
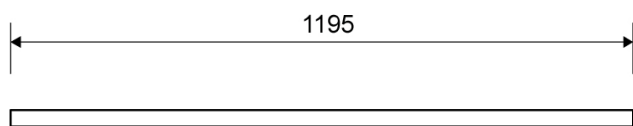
Exclusive design with top in solid 4 mm stainless steel

Insert ensures a snug fit inside the drain unit.



Specifications

ITEM NUMBER	GTIN NUMBER	WEIGHT INCLUDING PACKAGING
1910.1210	5707692004297	2700 g
WEIGHT EXCLUDING PACKAGING	MATERIAL	USAGE
2550 g	Stainless steel (AISI 304)	Line drain
SURFACE	INSTALLATION LENGTH (L)	HEIGHT (H)
Brushed	1195 mm	H 10 mm
LENGTH MODEL	FITS DRAIN UNIT	INSERT
1200 mm	1001, 1002, 1003, 1004, 1100, 5002, 5003	Synthetic



1910.1210

Products

1910.1212

Line 1910

Available in 10, 12, 15 and 25 mm heights (depending on the thickness of the floor tile)

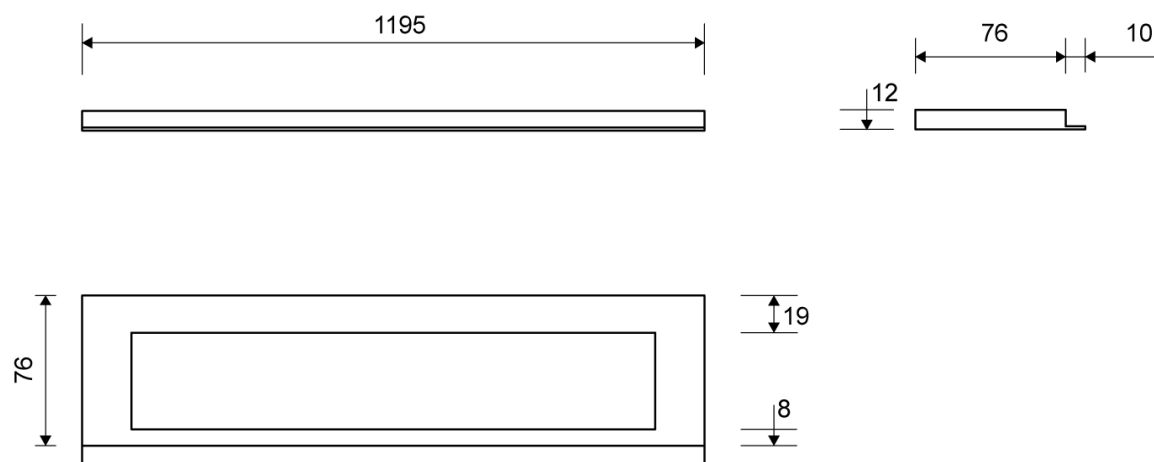
Exclusive design with top in solid 4 mm stainless steel

Insert ensures a snug fit inside the drain unit.



Specifications

ITEM NUMBER	GTIN NUMBER	WEIGHT INCLUDING PACKAGING
1910.1212	5707692004358	3100 g
WEIGHT EXCLUDING PACKAGING	MATERIAL	USAGE
2950 g	Stainless steel (AISI 304)	Line drain
SURFACE	INSTALLATION LENGTH (L)	HEIGHT (H)
Brushed	1195 mm	H 12 mm
LENGTH MODEL	FITS DRAIN UNIT	INSERT
1200 mm	1001, 1002, 1003, 1004, 1100, 5002, 5003	Synthetic



1910.1212

Products