

# PRODUCT SHEET

HighLine Colour frame (Brass)



**SKU 1915.0710**

**VVS Number 155040730**

Exclusive frame design with upper section of solid 4-mm stainless steel.

Insert ensures a snug fit inside the drain unit.

The frame enhances the exclusive design of the floor drain.

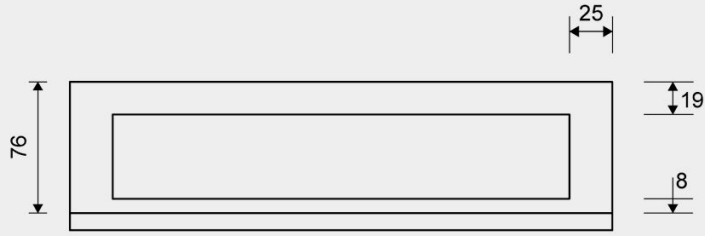
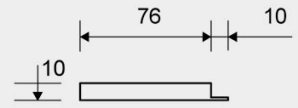
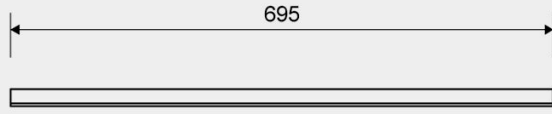
Frame available in 10, 12, 15 and 25 mm heights (depending on the thickness of the floor tile).

NB! Frame height (H) = tile thickness + approximately 2 mm for tile mortar and membrane.

HighLine Colour frame (Brass) - HighLine Colour frame

(Brass) 700/10 mm

<b>Size</b>	<b>Item Number</b>	<b>VVS Number</b>
700	1915.0710	155040730
<b>Net Weight</b>	<b>Weight Packaging Base</b>	<b>Material</b>
1.58	1.65	Stainless steel (AISI 304)
<b>Height</b>	<b>Surface</b>	<b>Installation Length</b>
10	PVD (Physical Vapour Deposition)	695
<b>Color</b>	<b>Insert</b>	
Brass	Synthetic	



## 1915.0810

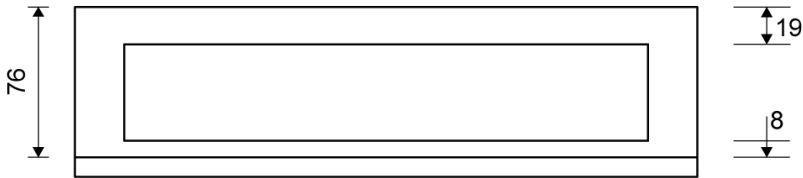
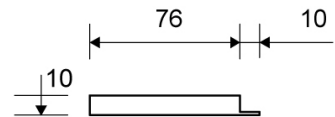
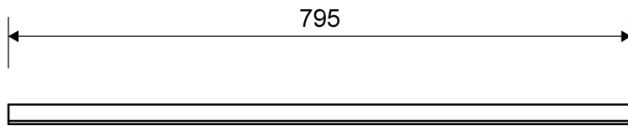
HighLine Colour frame | Brass

Exclusive frame design with top in 4 mm solid PVD-treated stainless steel  
 Insert ensures a snug fit inside the drain unit.



### Specifications

<b>ITEM NUMBER</b> 1915.0810	<b>GTIN NUMBER</b> 5707692011493	<b>MATERIAL</b> Stainless steel (AISI 304)
<b>USAGE</b> Linear drain	<b>SURFACE</b> PVD Brass	<b>INSTALLATION LENGTH (L2)</b> 795 mm
<b>HEIGHT (H)</b> H 10 mm	<b>LENGTH MODEL</b> 800 mm	<b>FITS DRAIN UNIT</b> 1001, 1002, 1003, 1004, 1100, 5002, 5003
<b>INSERT</b> Synthetic		



**1915.0810**

Products

# 1915.0910

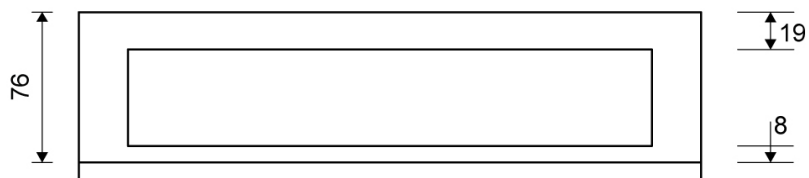
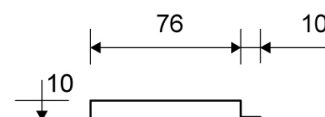
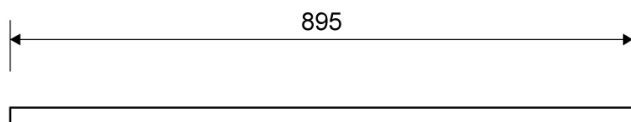
HighLine Colour frame | Brass

Exclusive frame design with top in 4 mm solid PVD-treated stainless steel  
 Insert ensures a snug fit inside the drain unit.



## Specifications

<b>ITEM NUMBER</b> 1915.0910	<b>GTIN NUMBER</b> 5707692009698	<b>MATERIAL</b> Stainless steel (AISI 304)
<b>USAGE</b> Linear drain	<b>SURFACE</b> PVD Brass	<b>INSTALLATION LENGTH (L2)</b> 895 mm
<b>HEIGHT (H)</b> H 10 mm	<b>LENGTH MODEL</b> 900 mm	<b>FITS DRAIN UNIT</b> 1001, 1002, 1003, 1004, 1100, 5002, 5003
<b>INSERT</b> Synthetic		



**1915.0910**

Products

# 1915.1010

HighLine Colour frame | Brass

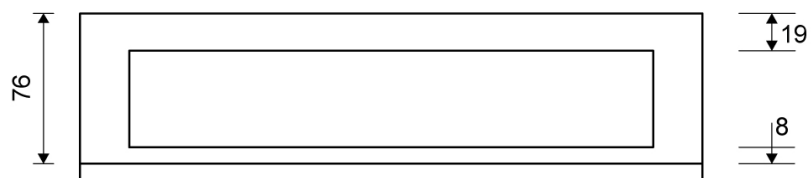
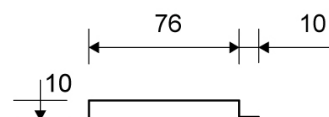
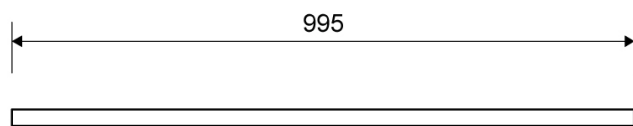
Exclusive frame design with top in 4 mm solid PVD-treated stainless steel  
 Insert ensures a snug fit inside the drain unit.



## Specifications

<b>ITEM NUMBER</b> 1915.1010	<b>GTIN NUMBER</b> 5707692011530	<b>MATERIAL</b> Stainless steel (AISI 304)
<b>USAGE</b> Linear drain	<b>SURFACE</b> PVD Brass	<b>INSTALLATION LENGTH (L2)</b> 995 mm
<b>HEIGHT (H)</b> H 10 mm	<b>LENGTH MODEL</b> 1000 mm	<b>FITS DRAIN UNIT</b> 1001, 1002, 1003, 1004, 1100, 5002, 5003
<b>INSERT</b> Synthetic		





**1915.1010**

Products

# 1915.1212

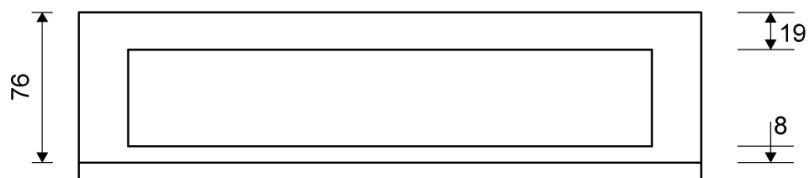
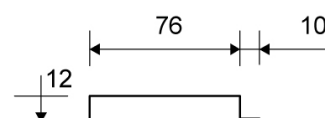
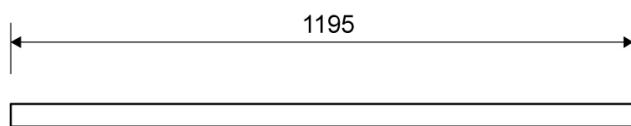
HighLine Colour frame | Brass

Exclusive frame design with top in 4 mm solid PVD-treated stainless steel  
 Insert ensures a snug fit inside the drain unit.



## Specifications

<b>ITEM NUMBER</b> 1915.1212	<b>GTIN NUMBER</b> 5707692012339	<b>MATERIAL</b> Stainless steel (AISI 304)
<b>USAGE</b> Linear drain	<b>SURFACE</b> PVD Brass	<b>INSTALLATION LENGTH (L2)</b> 1195 mm
<b>HEIGHT (H)</b> H 12 mm	<b>LENGTH MODEL</b> 1200 mm	<b>FITS DRAIN UNIT</b> 1001, 1002, 1003, 1004, 1100, 5002, 5003
<b>INSERT</b> Synthetic		



**1915.1212**

Products