



HANSAPOLO WASHBASIN FAUCET 51422293 EAN: 4057304002755



- Bathroom
- Single lever
- Chrome
- Fixed spout
- PCA® - constant flow rate regardless of pressure variations, HONEYCOMB® - improved lime protection
- Brass
- Hot/Cold symbols, Single operating lever/handle
- Limitation option for maximum temperature and flow-rate, Adjustable hot water stop (retrofitable)
- ø 35 mm ceramic cartridge for flow and temperature control
- Flexible inlet pipes
- Body made of DZR brass, Rapid installation system

Technical data

Flow properties

Flow-rate at 3 bar (with flow controller)

6.0 l/min

Technical properties

DN-size (nominal dimension)
Hot water supply
Working pressure
Connection size

DN15
max. +80°C
0.5-10 bar
G3/8

Regulations

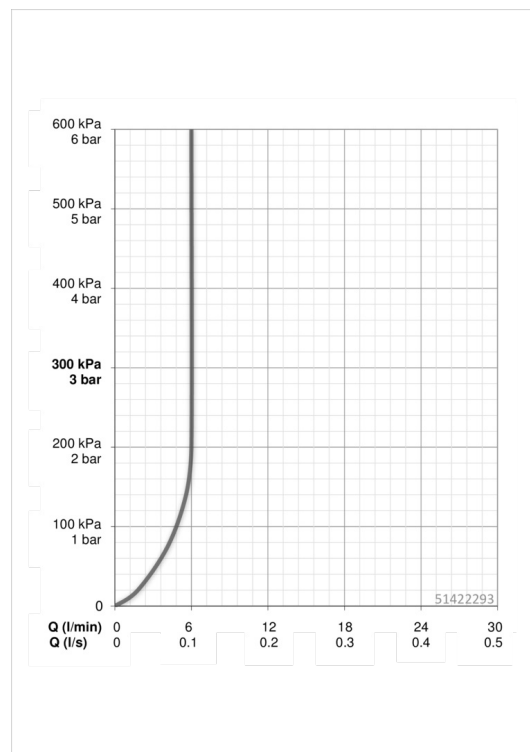
EN standard

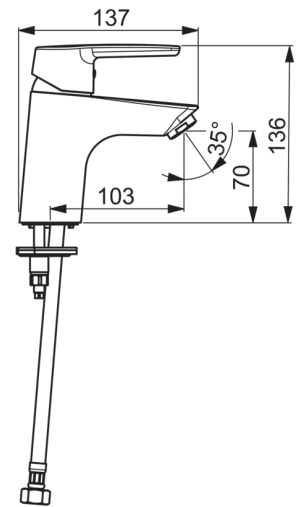
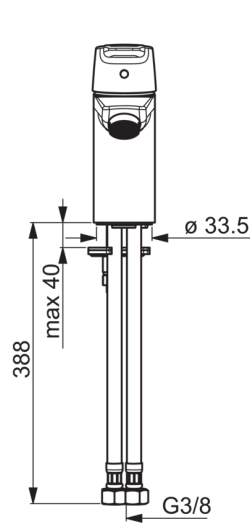
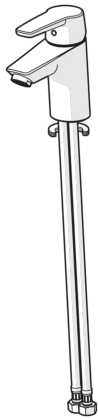
EN 817

Type approvals

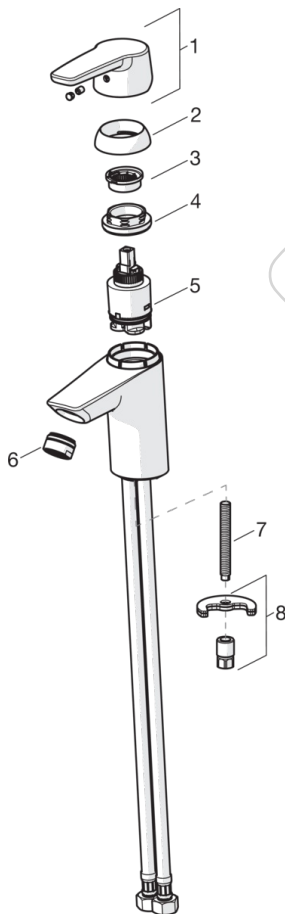
DVGW
KIWA
CSTB
ACS

NW-6506BP0361
K6116/06
322-M1-19/1
16 ACC NY 205





Spare parts



SP51402293

	Name	Code
01	Lever	59914417
02	Covering cap, 33 x 3 mm	59912504
03	Temperature adjustment limiter	59912325
04	Tightening nut, M40x1, SW30	59913210
05	Cartridge, 3.5 Classic	59913075
06	Aerator, M24x1, 6 l/min	59913727
06	Aerator, M24x1, Low pressure	59902692
07	Fixing screw, M8x1, L=140	59912474
08	Fixing set	59910749
N.I.	Pop-up operating rod	59914464
N.I.	Pop-up waste	59904620
N.I.	Pop-up waste, (2019-)	59914764

EAN: 4057304002779
static.hansa.com/51402293



- Washbasin
- Single-lever
- Deck mounted
- Chrome
- Fixed spout
- PCA® - constant flow rate regardless of pressure variations
- Hot/Cold symbols, Single operating lever/handle
- Pop-up waste with draw-rod
- Limitation option for maximum temperature and flow-rate, Adjustable hot water stop (included, retrofittable)
- ø 35 mm ceramic cartridge for flow and temperature control
- Flexible inlet pipes
- Inner body made of DZR brass, Rapid installation system

Technical data

Flow properties

Flow-rate at 3 bar (with flow controller)	6.0 l/min
Pressure loss with flow (0.1 l/s)	2 bar

Technical properties

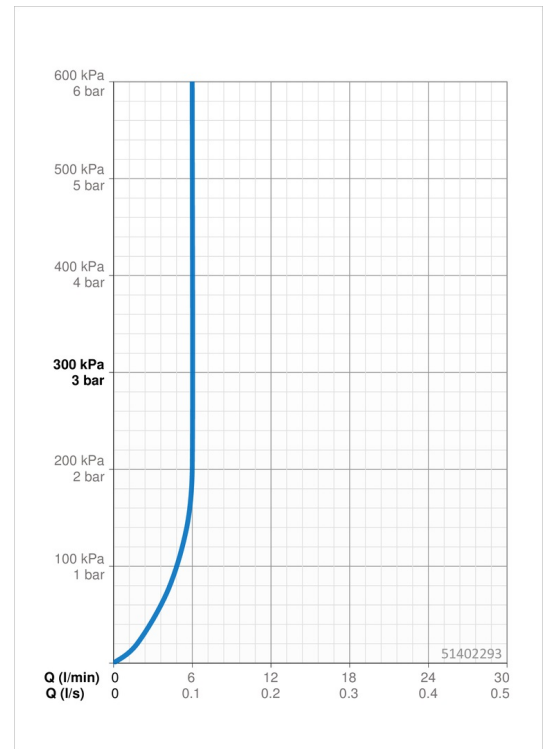
DN-size (nominal dimension)	DN15
Hot water supply	max. +70°C
Working pressure	0.5-10 bar
Connection size	G3/8
Projection	103 mm
Material	Brass

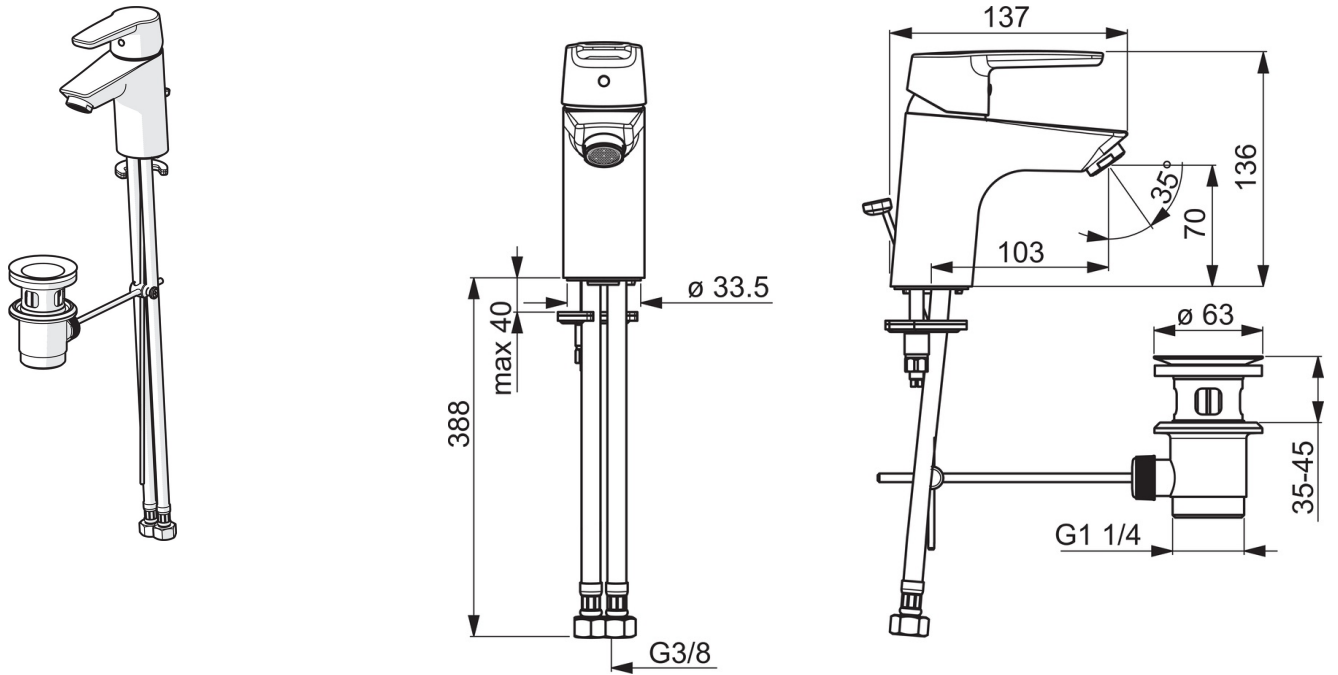
Regulations

EN standard	EN 817
Noise class	I (ISO3822)

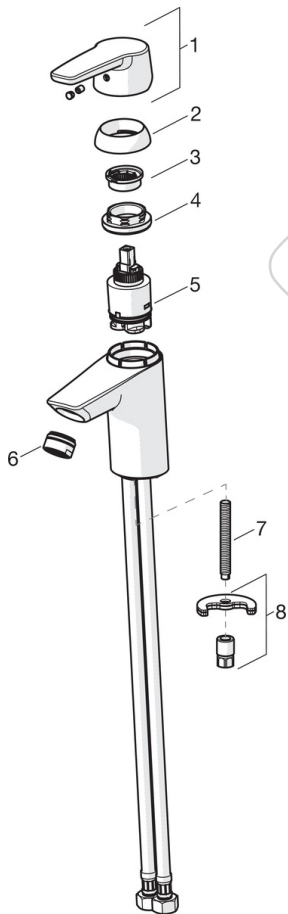
Approvals and Declarations

KIWA	K6116/08
DVGW	NW-6506BP0361
ABP	P-IX 29493/IA





Spare parts



SP51402293

	Name	Code
01	Lever	59914417
01	Long lever	59914633
02	Covering cap, 33x3 mm	59912504
03	Temperature adjustment limiter	59912325
04	Tightening nut, M40x1, SW30	59913210
05	Cartridge, 3.5 Classic	59913075
06	Aerator, M24x1 A, low pressure	59902692
06	Aerator, M24x1, 6 l/min	59913727
07	Fixing screw, M8x1, L=140	59912474
08	Fixing set	59910749
N.I.	Pop-up waste	59904620
N.I.	Flexible pipe, L=430, G3/8-M10x1	59912515
N.I.	Pop-up operating rod	59914464
N.I.	Pop-up waste, (2019-)	59914764